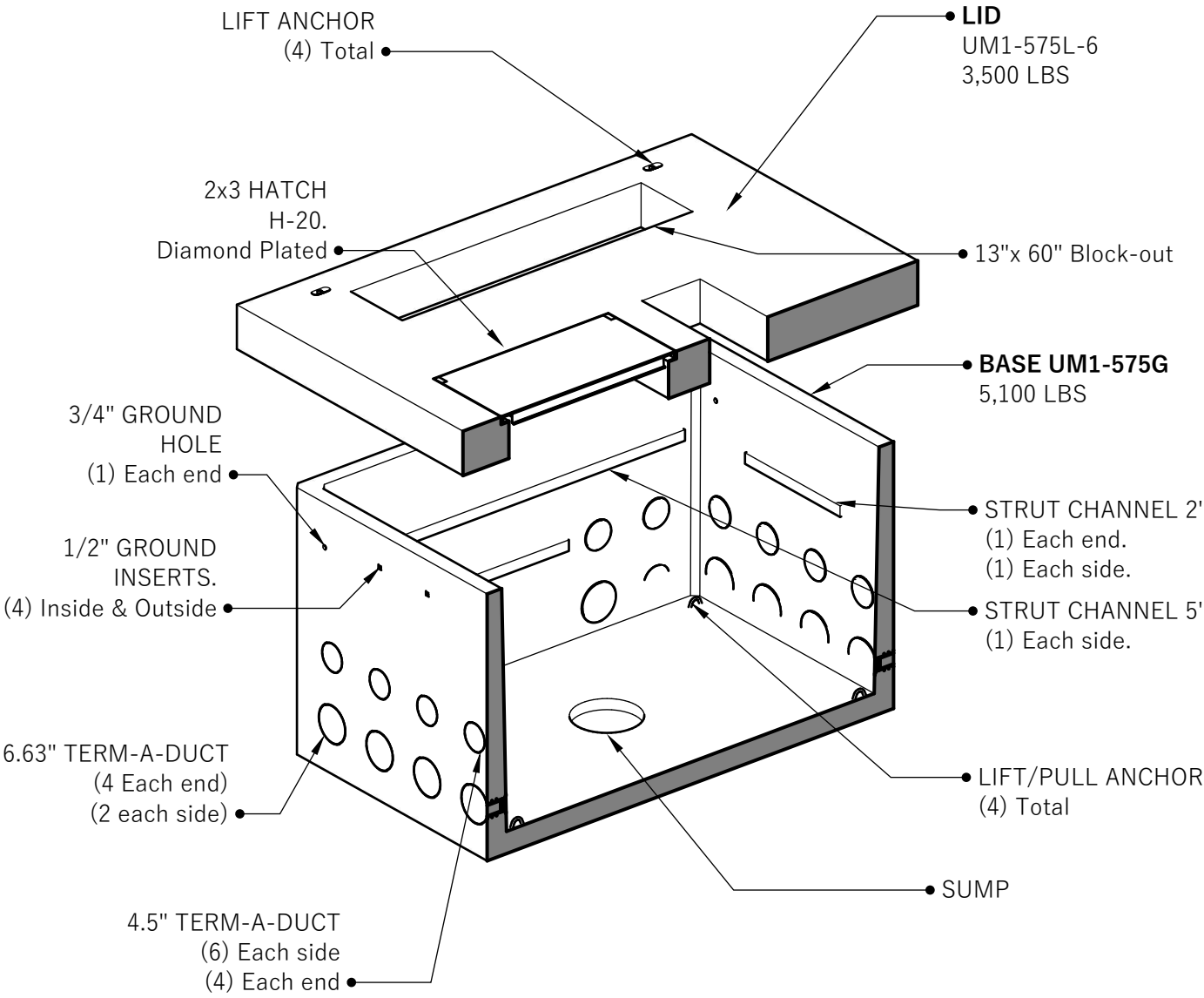


CEC UM1-575L-6

SECTION AA



Customer:
Project:
Product: CEC UM1-575L-6

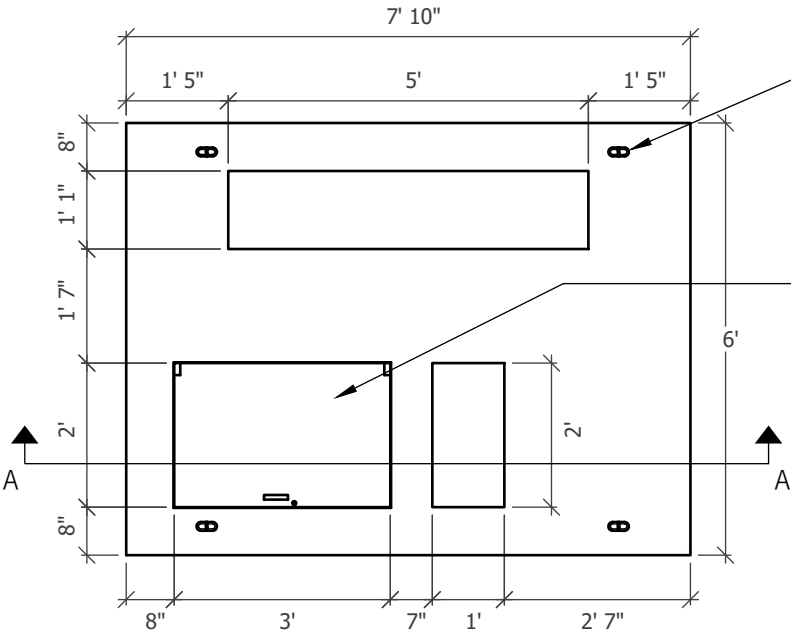


CEC UM1-575L-6

541-923-3272
 1111 NE 11TH ST.
 REDMOND, OR
 97756

CEC UM1-575L-6

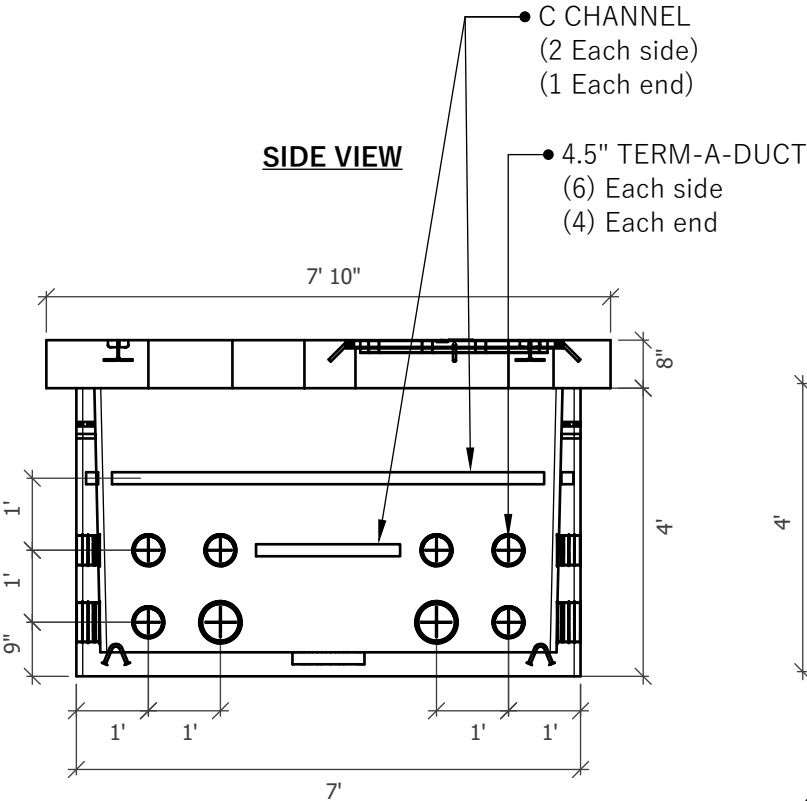
PLAN VIEW



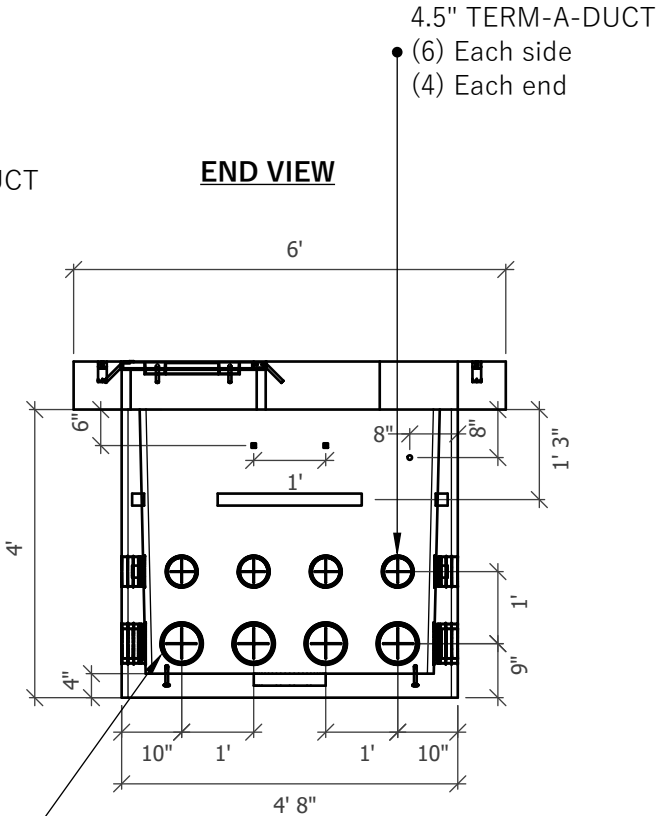
● LIFT ANCHORS
(4) Total.

● 2x3 HATCH
H-20.
Diamond Plated.

SIDE VIEW



END VIEW



Customer:

Project:

Product: CEC UM1-575L-6



CEC UM1-575L-6

541-923-3272
1111 NE 11TH ST.
REDMOND, OR
97756